



GUIDE PRICE

£725,000

Bishops Avenue

Bromley, BR1 3ET

PROPERTY SUMMARY

GUIDE PRICE £725,000 - £750,000 Skillfully extended and well maintained four double bedroom plus one single bedroom, two bathroom family home with potential to extend further. Situated on the popular Palace Estate, the accommodation comprises; to the ground floor, entrance hall, reception room, kitchen/dining room with access to the garden whilst to the first floor there are three bedrooms and a family bathroom. The second floor boasts two further bedrooms with a separate shower room/WC. Additional benefits include off road parking for at least two cars, as well as being within the catchment for Scotts Park, Bickley primary schools and Bullers Wood for Girls. Also a short walk from Bromley South station and the High Street. EPC: E

Freehold
COUNCIL TAX - E
Construction - Standard
Mains Services - Yes and metered water.
Heating System - Gas radiators
Broadband - Yes
Mobile coverage - Yes
Restrictive covenants - No

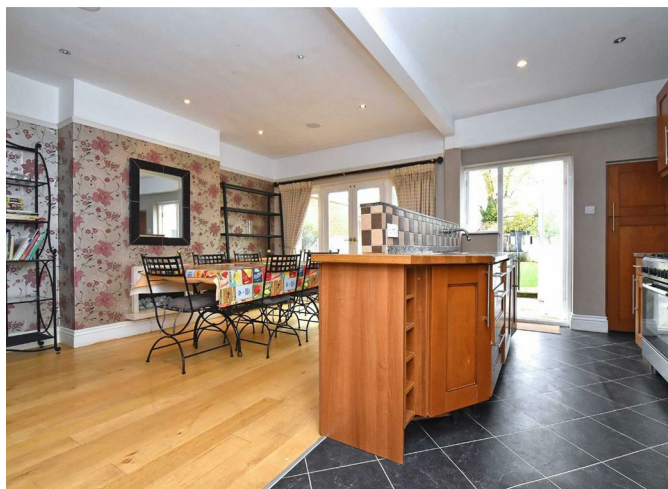
5



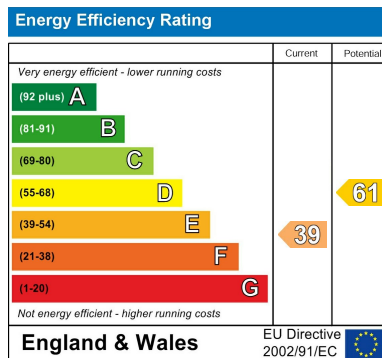
2



1







EPC RATING: E COUNCIL TAX BAND: E

Agents Note: Whilst every care has been taken to prepare these particulars, they are for guidance purposes only. All measurements are approximate and are for general guidance purposes only and whilst every care has been taken to ensure their accuracy, they should not be relied upon and potential buyers/tenants are advised to recheck the measurements

Sinclair Hammelton

OFFICE ADDRESS
23 High Street
Bromley
Kent
BR1 1LG

OFFICE DETAILS
0208 464 5566
info@sinclairhammelton.co.uk